

TRUCK TIRE LINE UP

KEEP YOUR TRUCKS ROLLING

We know that a rolling truck is a profitable truck. Our truck tire lineup is designed to:

Maximize Uptime: We offer industry-leading durability and retreadability, minimizing roadside breakdowns and maximizing the time your trucks spend on the road.

Lower Total Operating Cost: Fuel-efficient designs and long tread life help you reduce fuel consumption and tire replacement costs, keeping overall operating expenses down.

Uncompromising Safety: We prioritize safety. Our selection features advanced tread compounds and innovative construction for superior handling, traction, and stopping power in all weather conditions.

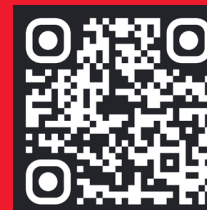


BRIDGESTONE FLEET ANALYZER

As part of our comprehensive fleet services, we proudly offer the **Bridgestone Fleet Analyzer** tool for smarter tire management. The Fleet Analyzer **tracks your tire status and performance in real-time** and analyzes out-of-service tires to create detailed reports that help you **reduce downtime and prevent costly road emergencies**.

FIND A LOCATION

For a full list of locations visit
CommercialTire.com/Locations



Employee Owned & Operated

17.5/19.5 ALL POSITION



R238 **BRIDGESTONE**
Wide base design for higher payloads with special tread compounds for durability.

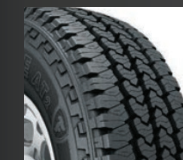


TForce AT **FIRESTONE**
Radial tire for all-terrain performance in commercial vehicles, promoting wet traction and overall performance.



AP580 **ACTN**
5-Rib tread design for improved stability and handling. Steel-belted toughness to improve treadwear and mileage.

17.5/19.5 DRIVE

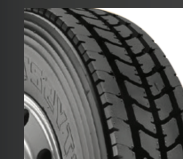


TForce AT **FIRESTONE**
Radial tire for all-terrain performance in commercial vehicles, promoting wet traction and overall performance.



DR780 **ACTN**
Maximum traction and durability for drive position, with stone ejectors to prevent drilling.

SEVERE DRIVE



TY527 **YOKOHAMA**
Maximized tread life, durability, retreadability, and reduced rolling resistance for modern fleets.



FDM212 **FORTUNE**
3 Peak Mountain snowflake rated for all weather conditions. Enhanced design for harsh environments.

CLOSED SHOULDER DRIVE



M760 **BRIDGESTONE**
Ultra-fuel-efficient radial drive tire for long- and regional-haul fleets. Low rolling resistance design delivers more mpg and longer removal mileage, with advanced traction in all conditions.



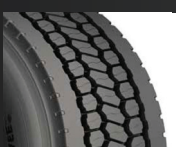
TY517 **YOKOHAMA**
A long-haul tire combining maximum drive axle power and fuel-saving MC2 technology, built to last mile after mile.



FDH106ET **F★RTUNE TIRES**
Generous 30/32nds tread depth for exceptional long-haul performance and consistency, mile after mile.



FDH131 **F★RTUNE TIRES**
High-speed performance, longer mileage, and minimized shoulder wear. Optimized for better grip, traction, and casing durability.



DR680 **ACTN AMERICAN COMMERCIAL TIRE NETWORK**
Mileage and minimized shoulder wear with wide, stable tread design for on and off-road service.

DROP PUSHER



R250 **BRIDGESTONE**
All-position radial tire with extra duty compounds for durability in mixed service applications.



RY023 **YOKOHAMA**
Premium all-position workhorse offering durable construction for demanding applications.



FS560 **Firestone**
All-position tire designed for high-scrub environments with strong traction and long mileage.



FTH102 **F★RTUNE TIRES**
Engineered for high-load spread-axle trailers with enhanced lateral force resistance.

ON/OFF HIGHWAY ALL POSITION



FS821 **Firestone**
Dependable, durable all-position tire with excellent traction for on/off-highway use.



FAM210 **F★RTUNE TIRES**
Chip/cut compound for longer life and resistance. Designed for heavy-duty vehicles.



MS880 **ACTN AMERICAN COMMERCIAL TIRE NETWORK**
Ideal for on/off-road service with a stable tread design.

ALL POSITION



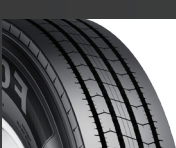
R250ED **BRIDGESTONE**
All-position radial tire with extra duty compounds for durability in mixed service applications.



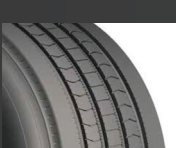
FS561A **Firestone**
Designed for demanding steer applications with solid shoulder ribs for enhanced durability.



RY023 **YOKOHAMA**
Premium all-position workhorse offering durable construction for demanding applications.



FAR602 **F★RTUNE TIRES**
Solid-shoulder design prevents wear, maximizes water evacuation. Stone ejectors protect casing.



AP580 **ACTN AMERICAN COMMERCIAL TIRE NETWORK**
5-Rib tread design for improved stability and handling. Steel-belted toughness to improve treadwear and mileage.

OPEN SHOULDER DRIVE



FD711 **Firestone**
High-traction drive tire for various service applications.



RD796 **ROADX**
Aggressive, open shoulder design for exceptional traction in mud and snow, with long tread life.



FDR601ET **F★RTUNE TIRES**
Open shoulder design for extra traction and tie-bar linked tread blocks for even wear. SmartWay verified.



DR780 **ACTN AMERICAN COMMERCIAL TIRE NETWORK**
Maximum traction and durability for drive position, with stone ejectors to prevent drilling.

WIDE BASE



M703 **BRIDGESTONE**
Greatec M703 Ecopia with ultra-wide base casing for predictable cost reduction per mile.



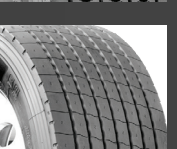
114R **YOKOHAMA**
Durable trailer tire for high scrub operations with superior resistance and optimized fuel efficiency.



902L **YOKOHAMA**
High-mileage tire offering outstanding traction and long original treadlife.



CD901 **ROADX**
Exceptional performance in line haul highway applications with stability and traction enhancements.



TR601 **ROADX**
High-performance super single trailer tire for line haul applications. Wide shoulder rib ensures stability and durability.

TRAILER



R123 **BRIDGESTONE**
Ultra-fuel efficient tire for long-haul and regional service applications, ideal for fuel-conscious fleets.



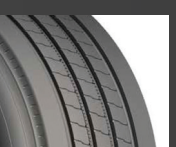
S FT409 **Firestone**
Long haul trailer tire with unbeatable treadwear and mileage, featuring a Bridgestone-engineered casing for durability.



109L **YOKOHAMA**
Super-efficient trailer tire engineered for close-quarter maneuvering with exceptional durability.



FTH107 **F★RTUNE TIRES**
Stability and better water evacuation with even wear and longer mileage. SmartWay verified.



TR280 **ACTN AMERICAN COMMERCIAL TIRE NETWORK**
All-position tire specifically designed for trailer application, with stability and low rolling resistance.

LH STEER



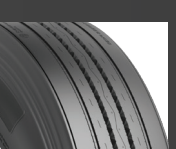
R213 **BRIDGESTONE**
Double-digit improvements in wear performance for long-haul and regional service fleets.



FS591 **Firestone**
Steer position radial tire with reduced weight and enhanced durability.



FS509 **Firestone**
Long haul steer tire with unbeatable treadwear and mileage, featuring a Bridgestone-engineered casing.



FFH130ET **F★RTUNE TIRES**
Higher load index and 16-ply rating for heavy tractors. SmartWay verified.

315 ALL POSITION



FS860 **Firestone**
All-position radial tire specifically engineered for refuse applications with improved wear performance.



FAR603 **F★RTUNE TIRES**
Multi-angle grooves for tread rigidity and lower noise. Smart “Movematic” sipes for all-weather performance.

SUPER SINGLE ALL POSITION



FS818 **Firestone**
Wide base design for higher payloads with special tread compounds for durability.



FAM211 **F★RTUNE TIRES**
Chip/cut compound for longer life and resistance. Wide base design for heavy-duty vehicles.



RDX 670 **ROADX**
Super single tire for high scrub applications, featuring enhanced lateral and wet traction.

ALL WEATHER DRIVE



W919 **BRIDGESTONE**
Aggressive traction in heavy snow and ice with long tread life and excellent retreadability.



RD798 **ROADX**
Premium regional/highway drive tire with exceptional traction in all seasons, featuring a deep tread for long service life.